

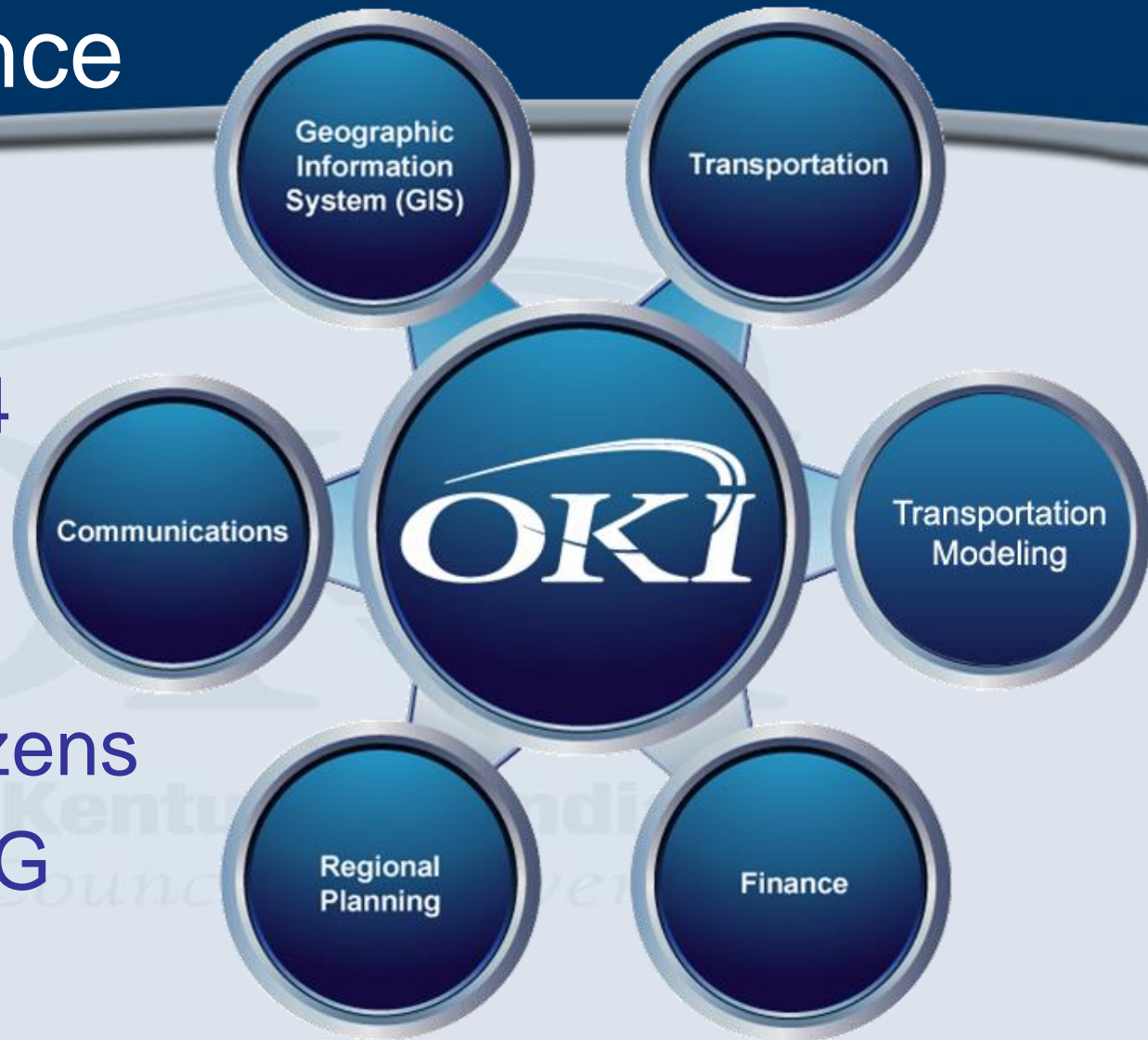


Ohio • Kentucky • Indiana
Regional Council of Governments



OKI at a Glance

- Formed in 1964
- Three-states
- Eight-counties
- Two million citizens
- MPO and RCOG



Return on Investment in OKI

Jurisdictions provide: \$664,000

Jurisdictions received: \$42,000,000

R.O.I is 63 to 1

Ohio • Kentucky • Indiana
Regional Council of Governments



Resources at OKI

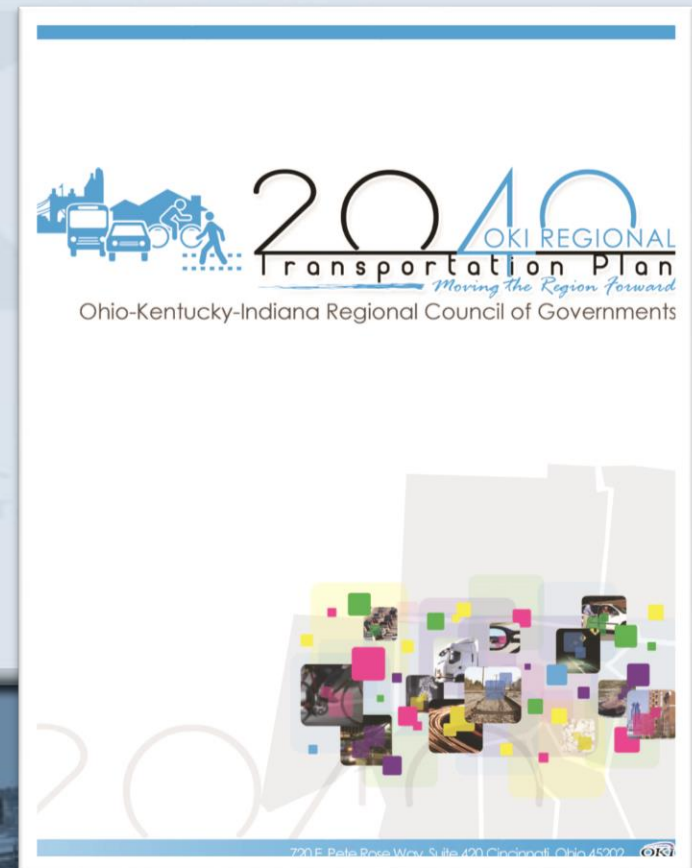
- Regional Studies meeting federal or state requirements or regional needs
- Technical assistance and expertise
- Funding Programs

Ohio • Kentucky • Indiana
Regional Council of Governments



OKI Regional Studies

- 2040 Long Range Plan
- Transportation Improvement Plan (TIP)
- Regional Freight Plan
- Regional Water Quality Management Plan
- Strategic Regional Policy Plan



Staff Expertise

- Freight
- Bike & Ped
- Demographics
- Air Quality/Congestion
- Water Quality/Watershed Planning
- GIS
- Land Use/Comprehensive Planning
- Travel Demand Forecasting
- Greenspace



OKI Funding Programs:

- Surface Transportation Program (STP)
 - * For road construction on non-local roads
- Congestion Mitigation Air Quality (CMAQ)
 - * Reduce air pollution and improve congestion
- Transportation Alternatives (TA)
 - * Safe Routes to School and Infrastructure Projects

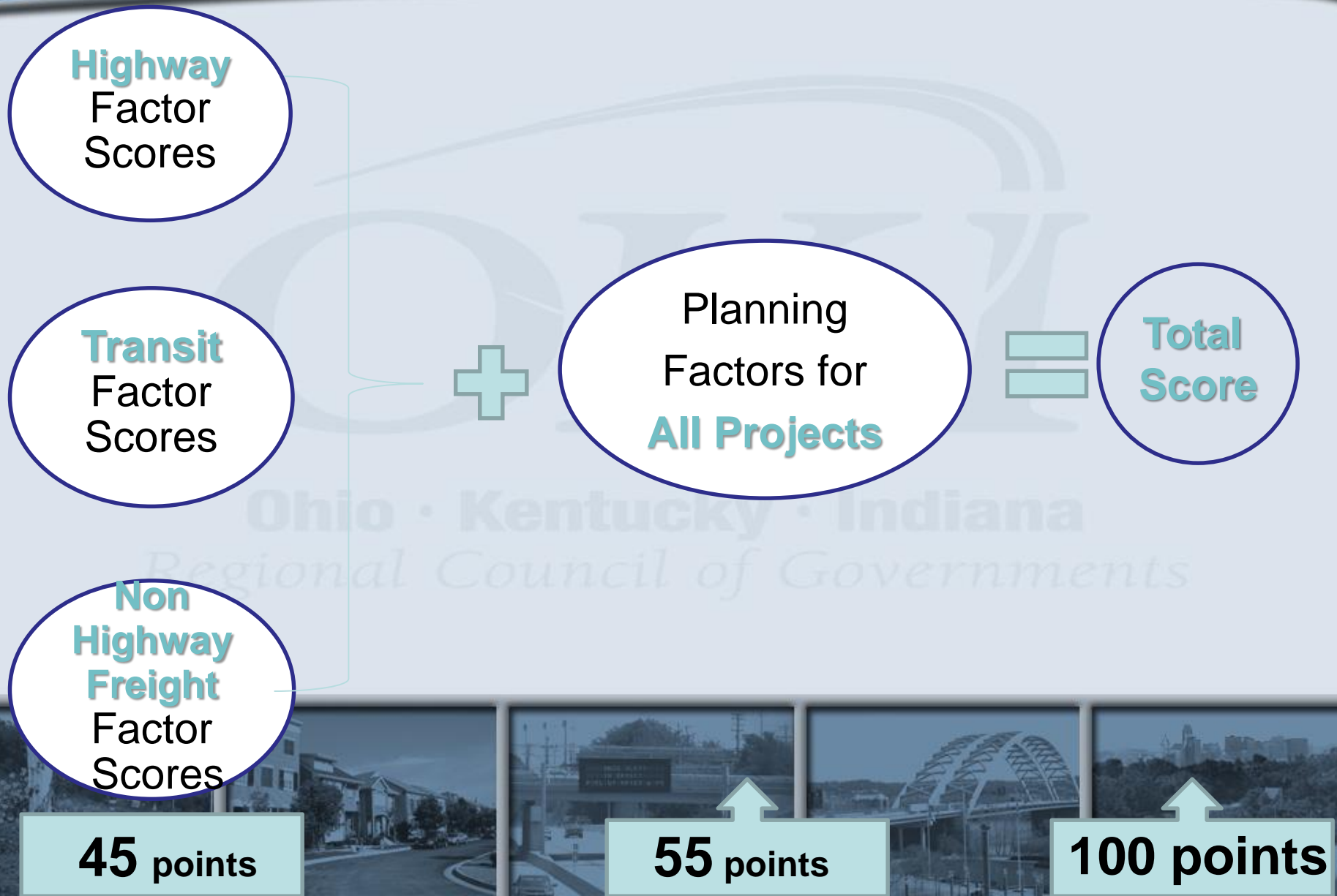


Developing Good Projects

- Funding is Competitive
- Starts with Good Planning!
- Current Cost Estimate
- Good Project Narrative
 - Succinct
 - Demonstrate understanding of project and effects



Prioritization Process



Planning Factors for All Projects

- Replacement/Expansion
- Environmental Justice
- Strategic Regional Policy Plan (SRPP) *
- Local Planning *
- Air Quality/Energy
- Local Share
- Existing Condition
- Economic Vitality
- History of Project Delivery
- Applicants requesting additional funds
- Intermodal Elements



Other OKI Activities & Resources

- SRPP
- Planning Guidance & Technical Assistance
- Fiscal Impact Model
- Regional Planning Forum
- Partner on Regional Trails Plan

Ohio • Kentucky • Indiana
Regional Council of Governments



SRPP Update

Strategic Regional Policy Plan

- Transportation
- Public Facilities & Service
- Natural Systems
- Land Use
- Economic Development
- Housing



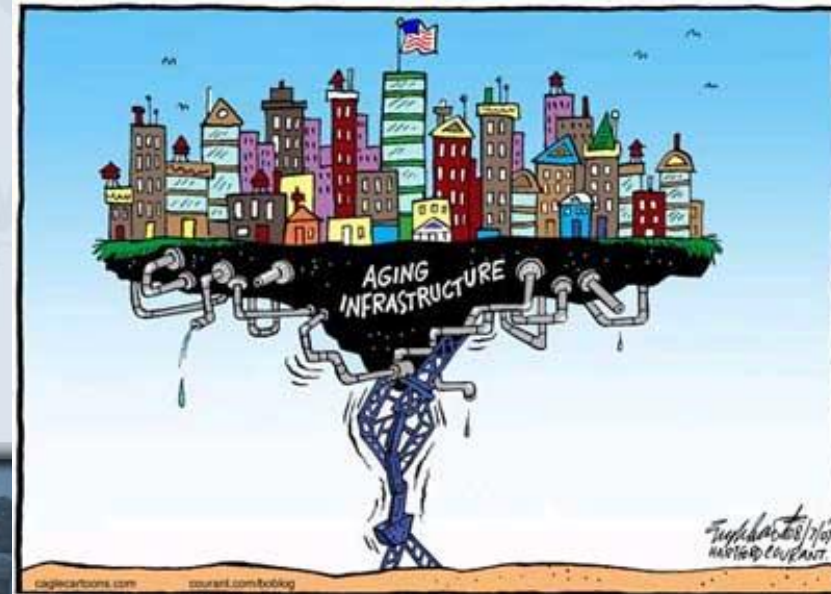
HOW do WE **GROW** From Here?
Strategic Regional Policy Plan



SRPP Update

New & Revised Strategic Regional Issues

- Maintaining infrastructure
- Increasing storm water run-off
- Regional quality of life assets
- Community health
- Demographic shifts



Plan Guidelines & Sample Ordinances

- Elements of an Effective Local Comprehensive Plan
- Community Choices – Planning Guidance and Sample Ordinances:
 - Transit Friendly Development
 - Mixed-Use Development
 - Large Scale Retail Development
 - Infill Development
 - Street Connectivity
 - Bicycle & Pedestrian Facility Standards
 - **Public Health***

ELEMENTS OF AN EFFECTIVE LOCAL COMPREHENSIVE PLAN



PREPARED BY:
OHIO-KENTUCKY-INDIANA
REGIONAL COUNCIL OF
GOVERNMENTS
FEBRUARY, 2006

Fiscal Impact Analysis Model



FISCAL IMPACT AN

[Home](#) [My Profile](#) [Administrator](#) [Documents](#) [Terms & Conditions](#) [Log Out](#)

[General Info](#) > [Existing Land Uses](#) > [Proposed Land uses](#) > [Results](#)

FISCAL IMPACT ANALYSIS RESULTS MALL REDEVELOPMENT

SAVED SCENARIO

[Show Options](#)

NET ESTIMATED FISCAL RESULTS

[Show Net Estimated Impact Report](#)

NET ESTIMATED IMPACT

	Total Fiscal Impact
Net Revenues	\$244,899.82
Net Expenditures	(\$43,891.94)
Net Impact	\$288,791.76

[Export to Excel](#) [Export to Word](#)

NET ESTIMATED FISCAL REVENUES

	Property Tax	Income Tax	Sales Tax	Estate Tax	Charges for Service	Other Revenues	Total Fiscal Revenues
Proposed	\$332,778.79	\$0.00	\$0.00	\$0.00	\$2,949.46	\$12,582.22	\$348,310.47
Existing	\$89,321.93	\$0.00	\$0.00	\$0.00	\$2,972.25	\$11,116.46	\$103,410.65
Net Revenue	\$243,456.86	\$0.00	\$0.00	\$0.00	(\$22.80)	\$1,465.76	\$244,899.82

[Export to Excel](#) [Export to Word](#)



Regional Planning Forum



Regional Trails Plan Underway

- Funded by Interact for Health
- Green Umbrella
 - OKI, Great Parks, Rails to Trails, Human Nature
- Public Map accessible online to the public
 - Existing and Planned Trails in the Region
- Community Engagement Meetings
 - Nov.-Dec
 - Spring 2014



Green Umbrella

REGIONAL SUSTAINABILITY ALLIANCE



Emi Randall
Sr. Planner, Land Use
erandall@oki.org

OKI Regional Council of Governments
720 East Pete Rose Way – Suite 420
Cincinnati, OH 45202

513-621-6300
www.oki.org

